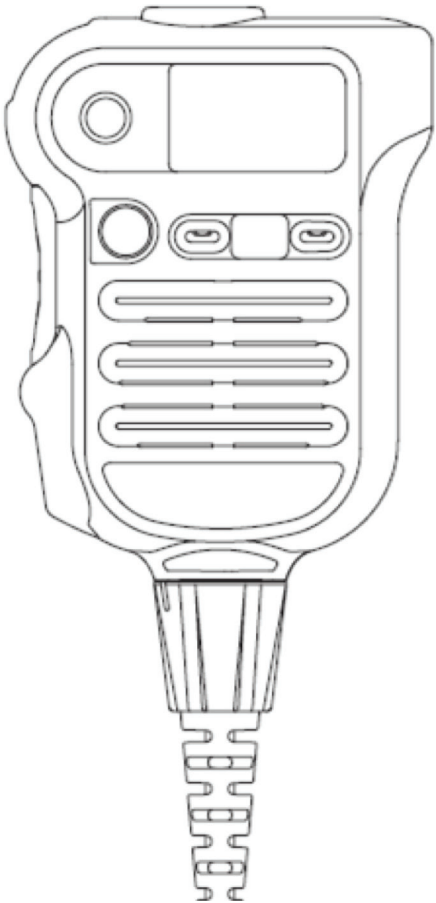
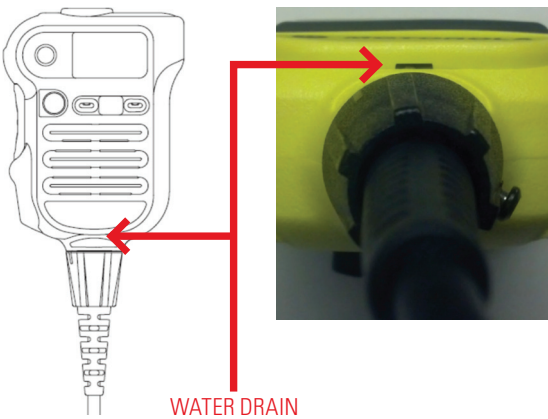


# BEST PRACTICES FOR XE RSM



# FOR THE BEST PERFORMANCE IN EXTREME ENVIRONMENTS, ALWAYS FOLLOW 3 SIMPLE RULES.

## 1. ALWAYS WEAR ORANGE BUTTON UP FOR BEST WATER DRAINAGE



YES



YES

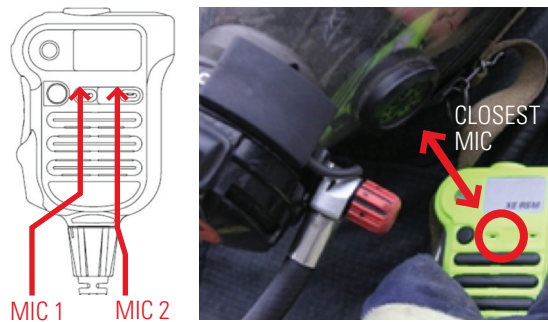


YES

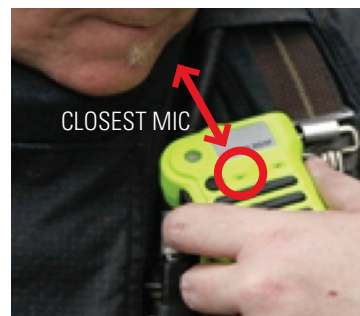


NO

## 2. ALWAYS TALK CLOSEST MIC FOR BEST VOICE QUALITY



1-2 inches

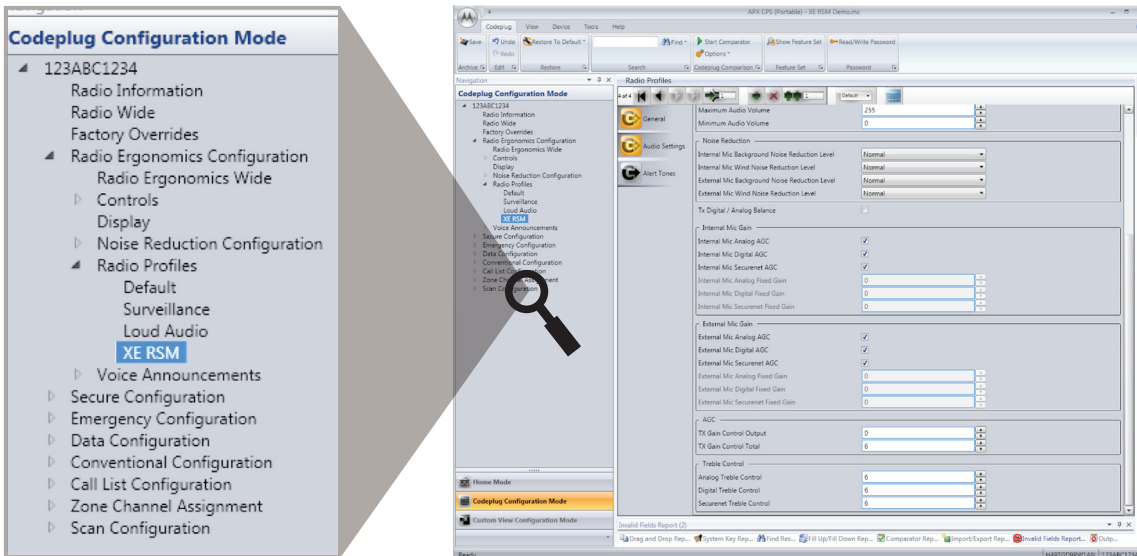


## 3. ALWAYS SHAKE TO CLEAR WATER AND THEN TALK



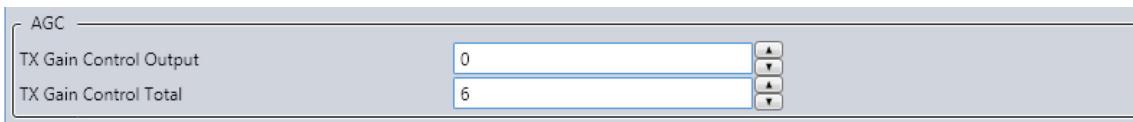
Two or three brisk  
vertical shakes  
will cause water to  
drain faster.

# RADIO PROFILE CONFIGURATION ENHANCEMENT



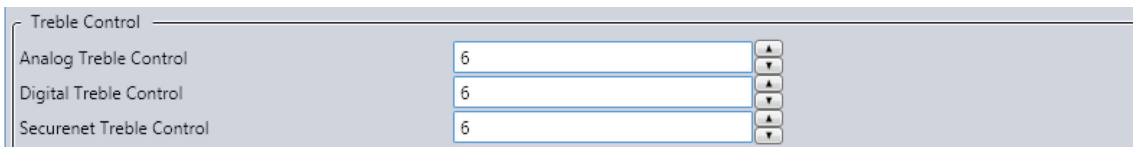
Improve communication intelligibility with two APX Radio Profile Audio Setting CPS (Customer Programming Software) changes.

## 1. Enable **TRANSMIT** External Mic AGC to optimize XE RSM microphone signal level.



Set 'TX Gain Control Output' to 0, 'TX Gain Control Total' to 6.

## 2. Boost **RECEIVE** Treble Frequency to add crispness to speaker signal for better intelligibility.



Set 'Treble Control' to 6

Motorola Solutions, Inc.  
1301 East Algonquin Road, Schaumburg, Illinois 60196, U.S.A.  
800-367-2346  
**[motorolasolutions.com](http://motorolasolutions.com)**

MOTOROLA, MOTO, MOTOROLA SOLUTIONS and the Stylized M Logo are trademarks or registered trademarks of Motorola Trademark Holdings, LLC and are used under license. All other trademarks are the property of their respective owners. © 2013 Motorola Solutions, Inc. All rights reserved.

